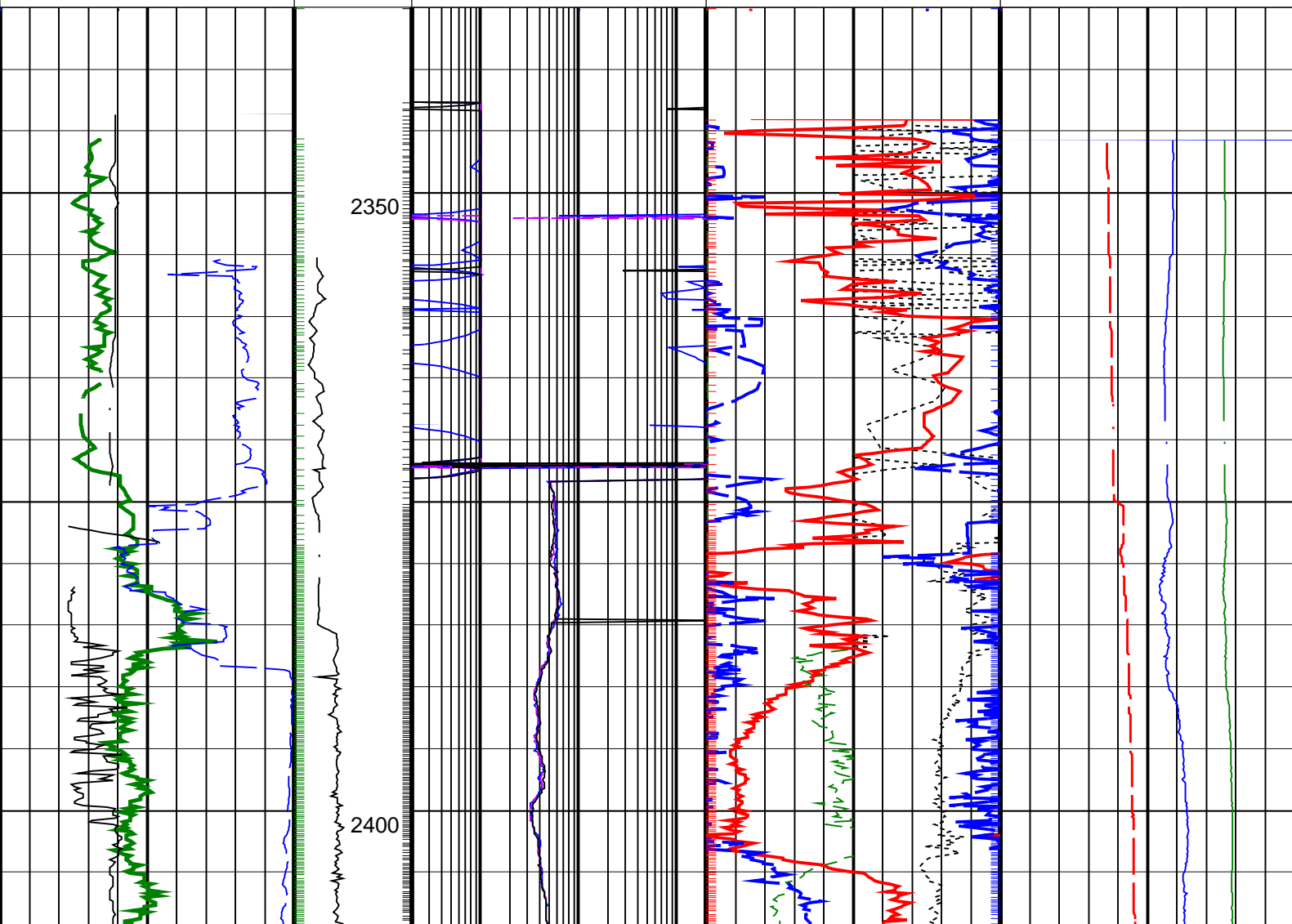
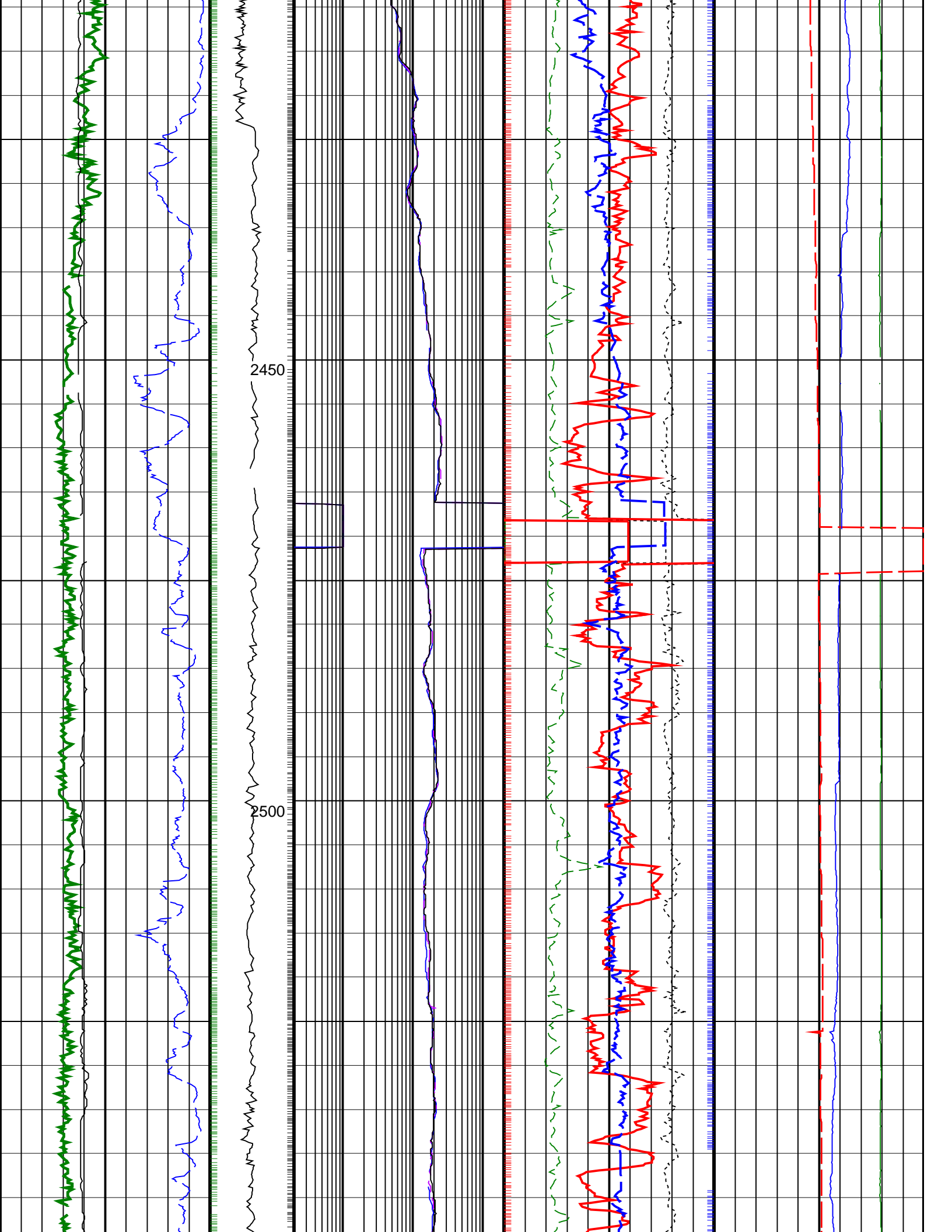


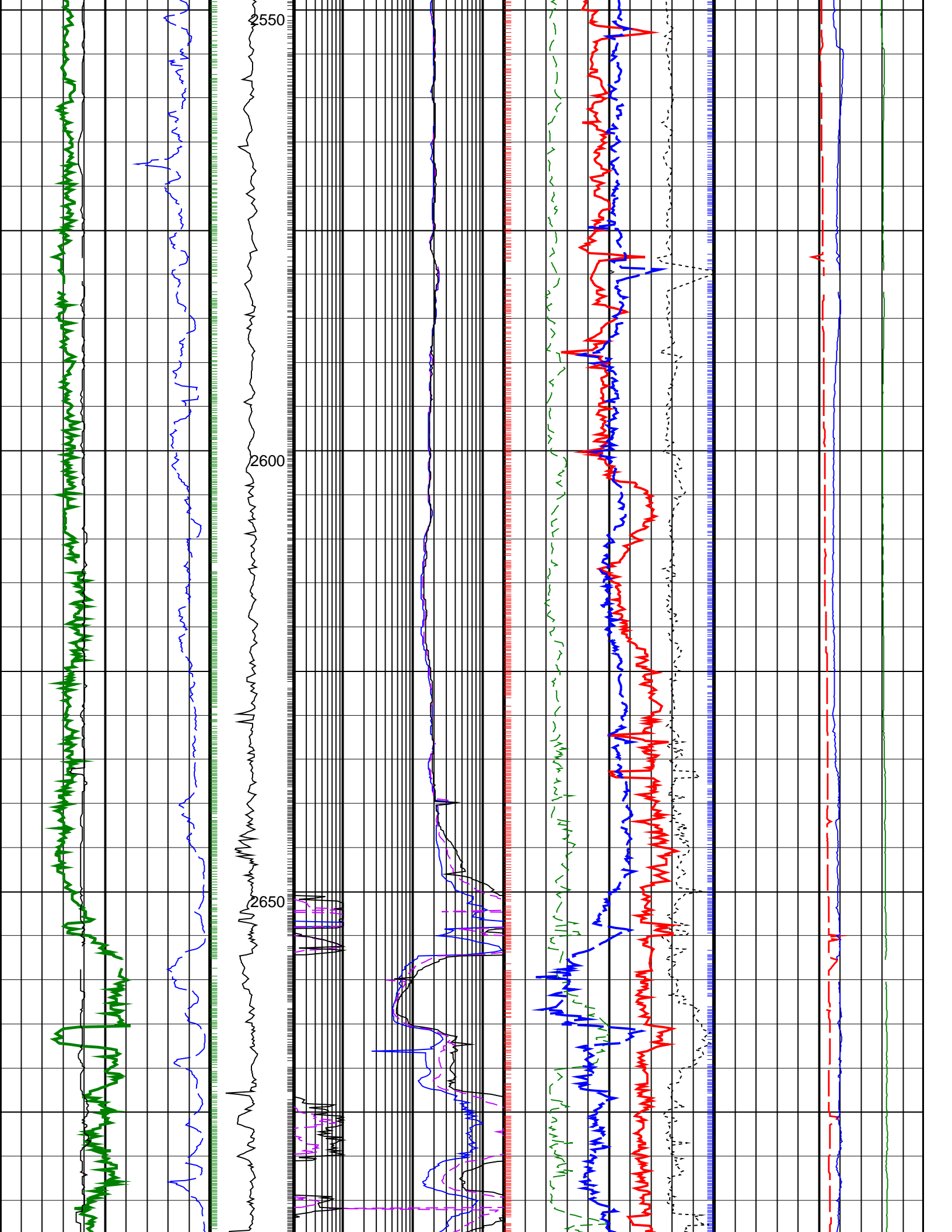
PIP SUMMARY

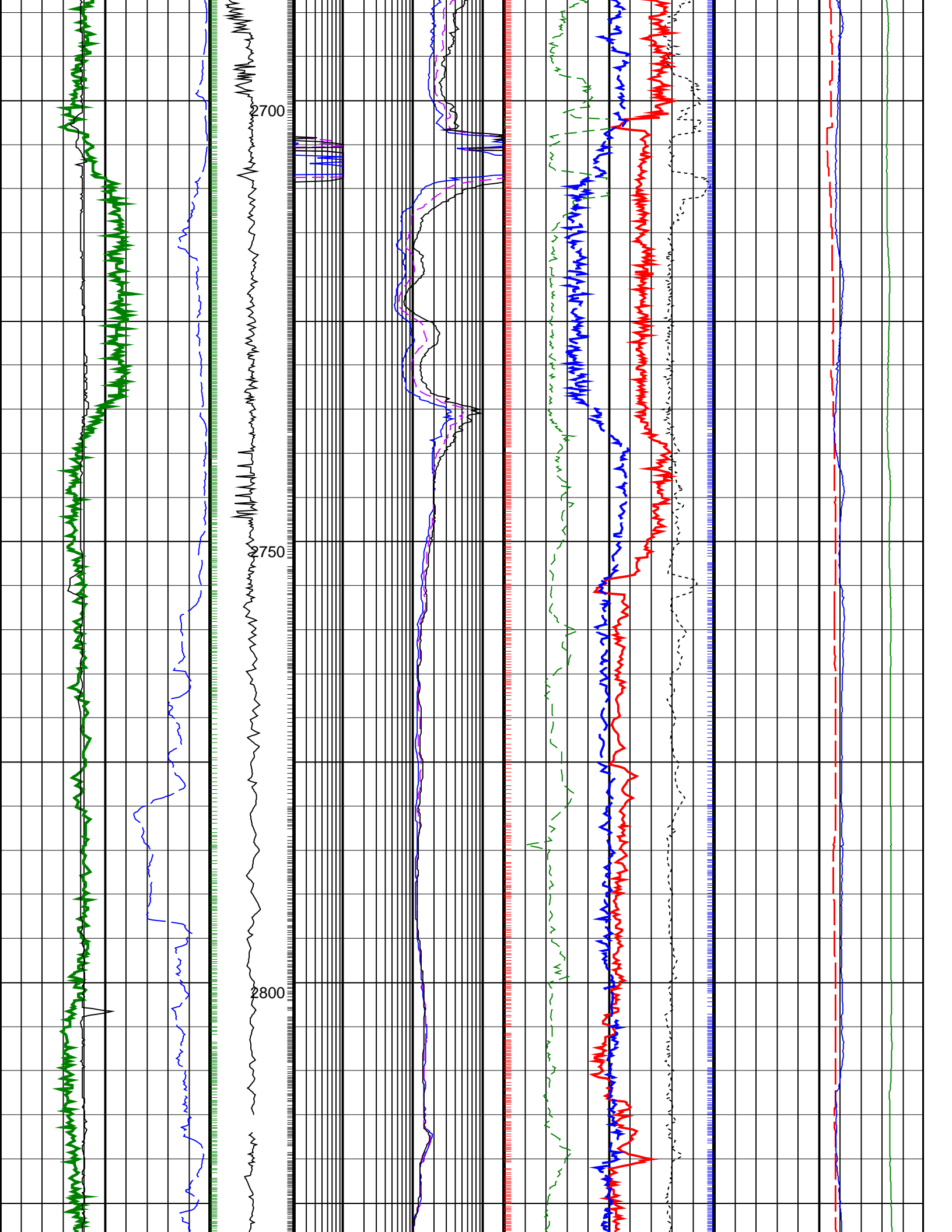
Density Samples +
 Gamma Ray Samples
 Resistivity Samples
 Neutron Samples +

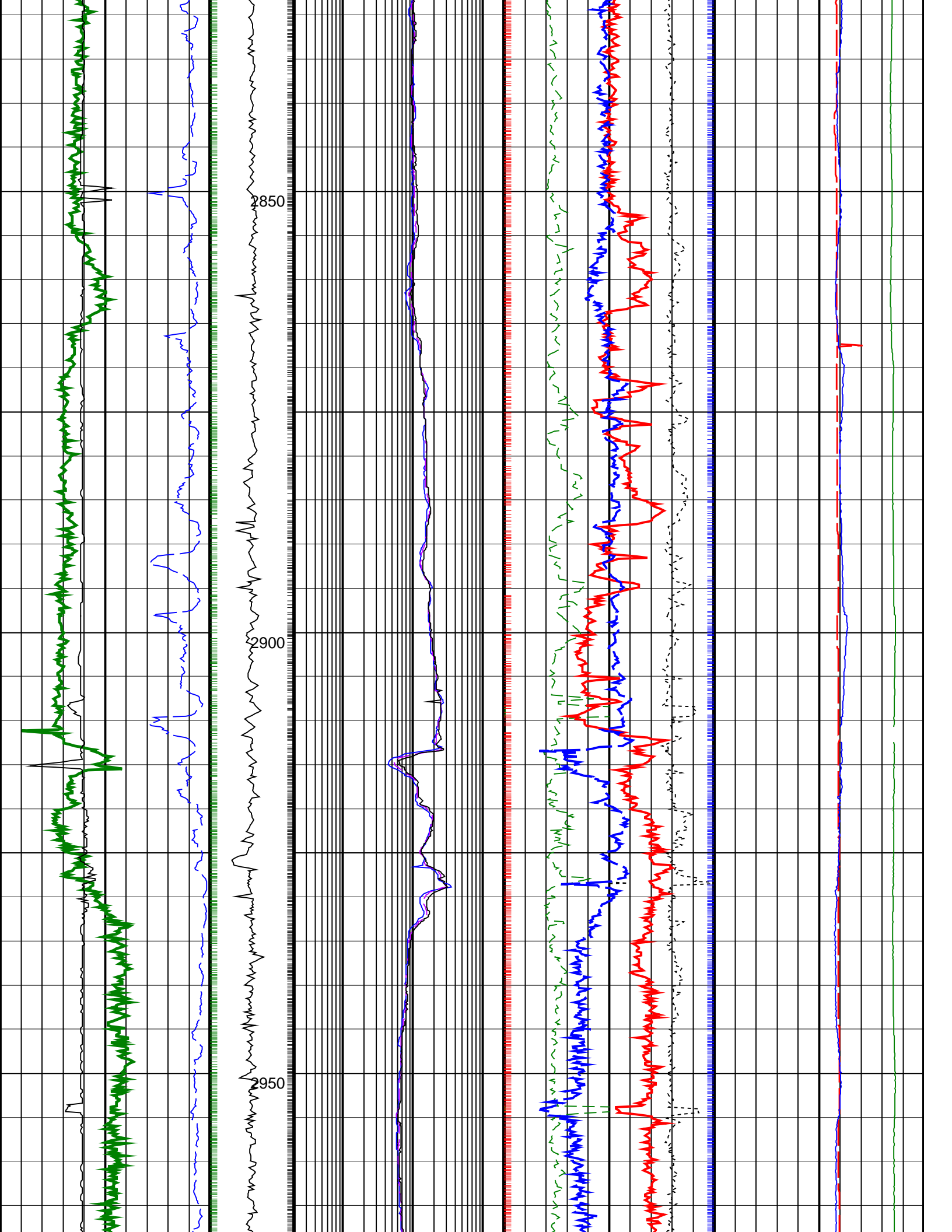
Gamma Ray, Average, Real-Time, Computed Downhole (GRMA_DH_ECO_RT) (GAPI)	ARC Phase Shift Resistivity 40 inch at 2 MHz, Real-Time (P40H_ECO_RT) (OHMM)	Thermal Neutron Porosity, Average, Real-Time (TNPH_ECO_RT) (PU)	Equivalent Circulating Density, Real-Time (ECD_ECO_RT) (LB/G)
0 200	0.2 200	45 -15	10 15
Ultrasonic Caliper, Average Diameter, Real-Time, Computed Downhole (UCAV_DH_ECO_RT) (IN)	ARC Phase Shift Resistivity 28 inch at 2 MHz, Real-Time (P28H_ECO_RT) (OHMM)	Photoelectric Factor, Bottom, Real-Time, Computed Downhole (PEB_DH_ECO_RT) (G/C3)	Bulk Density Correction, Bottom, Real-Time Computed Downhole (DRHB_DH_ECO_RT) (G/C3)
6 16	0.2 200	0 10 -0.25 0.25	Downhole Annulus Pressure, Real Time, Computed Downhole (DHAP_DH_ECO_RT) (PSI)
ROP*5 (ROP5) (M/HR)	MWD Collar RPM (CRPM_RT) (RPM) (RPM)	ARC Phase Shift Resistivity 16 inch at 2 MHz, Real-Time (P16H_ECO_RT) (OHMM)	Bulk Density, Bottom, Real-Time, Computed Downhole (ROBB_DH_ECO_RT) (G/C3)
200 0	0 400	0.2 200	Downhole Annulus Temperature, Real Time, Computed Downhole (DHAT_DH_ECO_RT) (DEGC)
		1.85 2.85	0 200

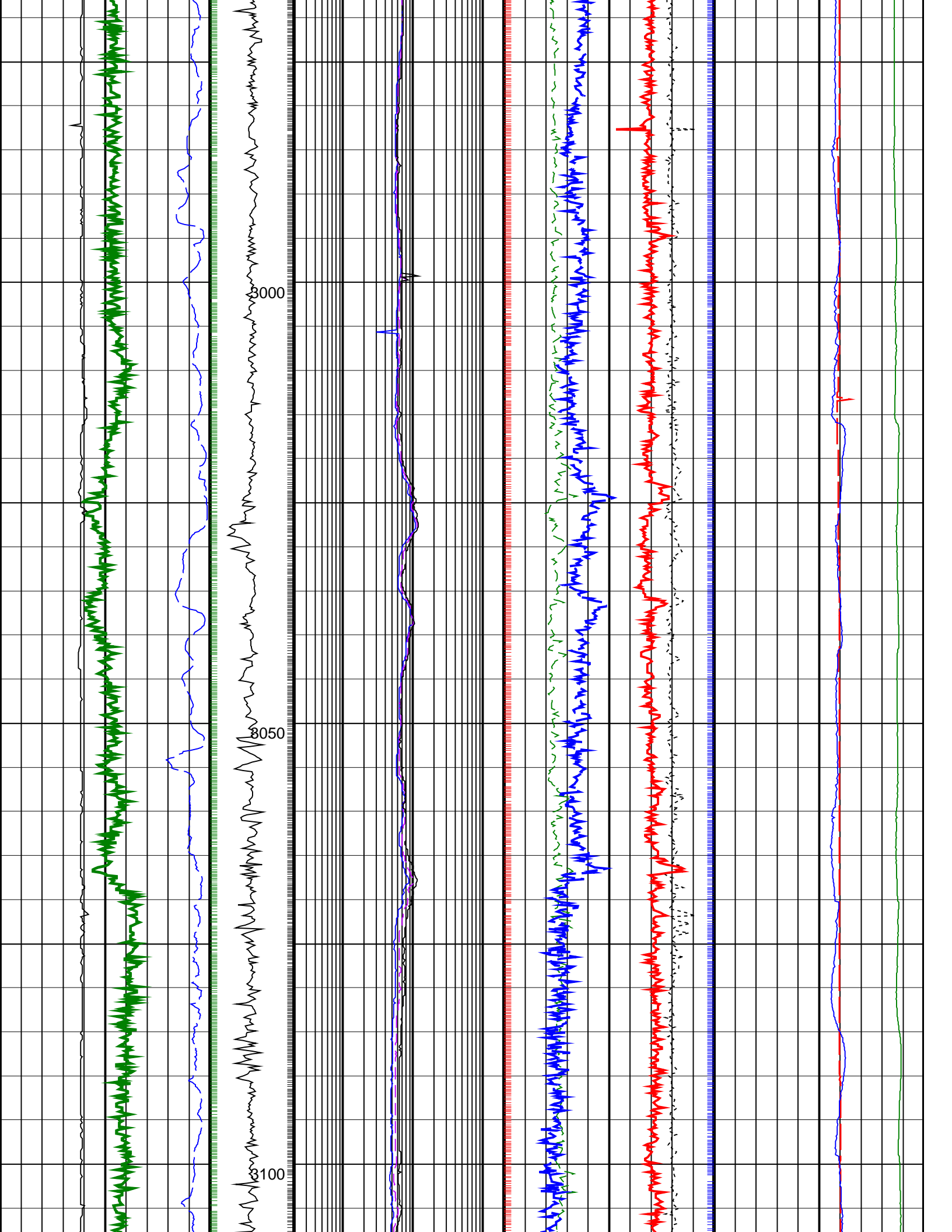


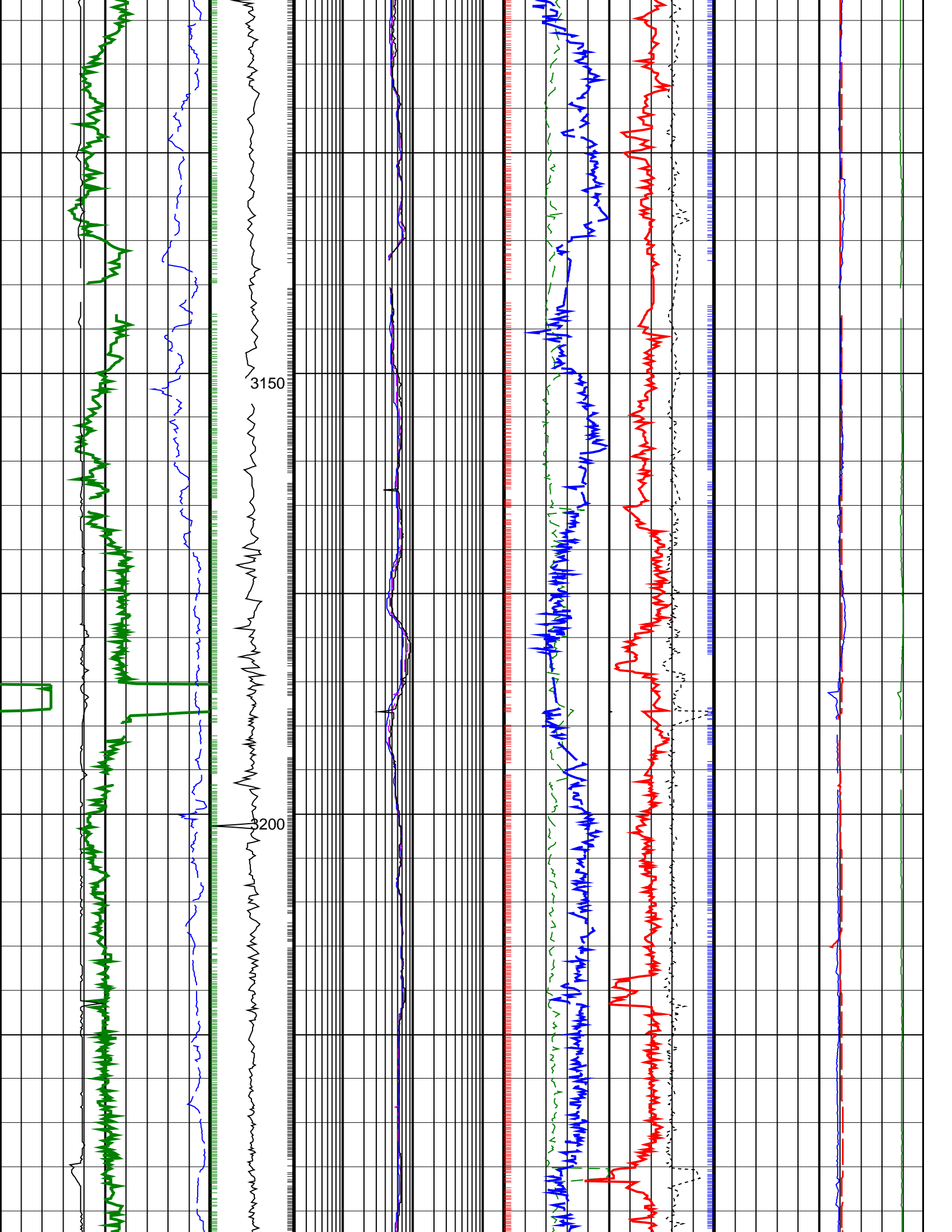


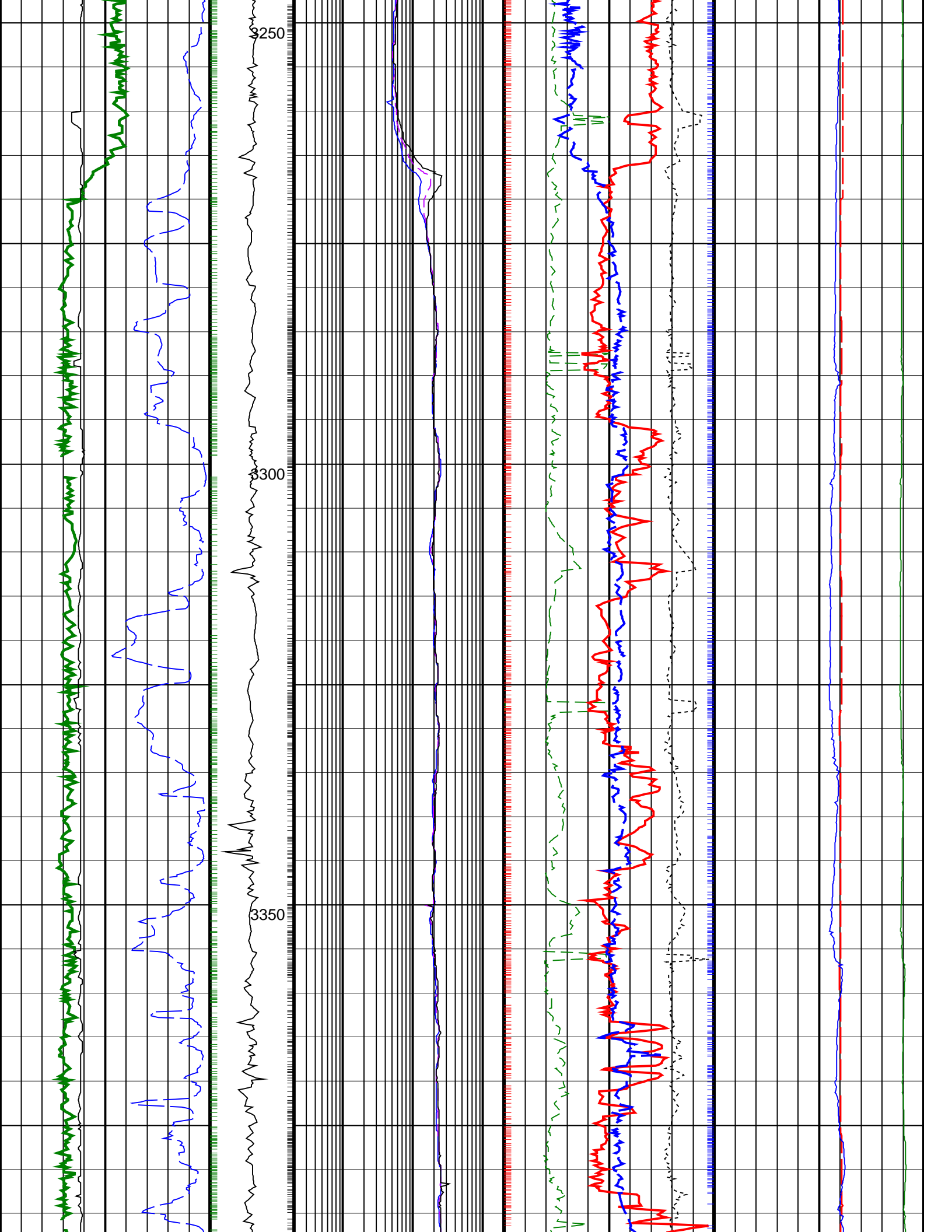


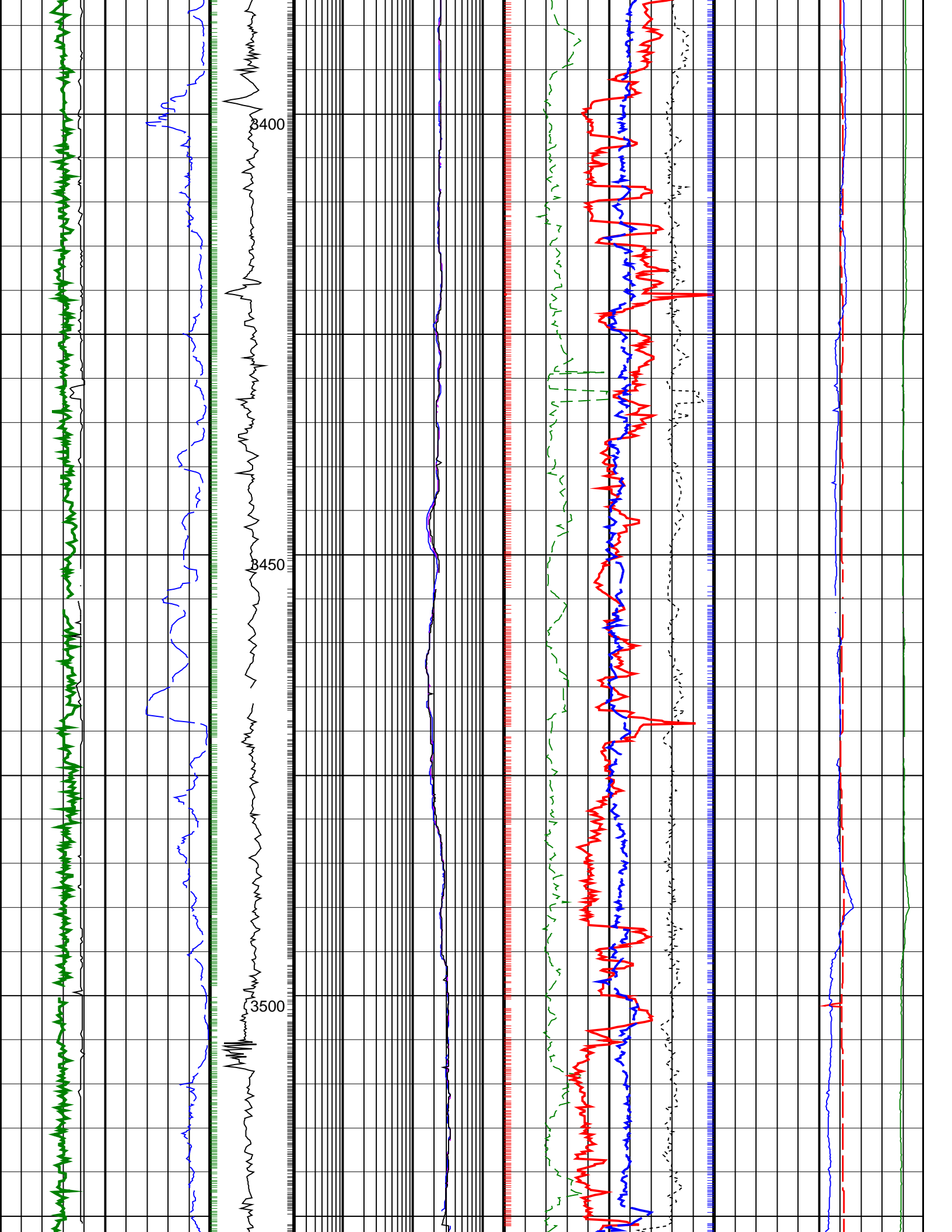


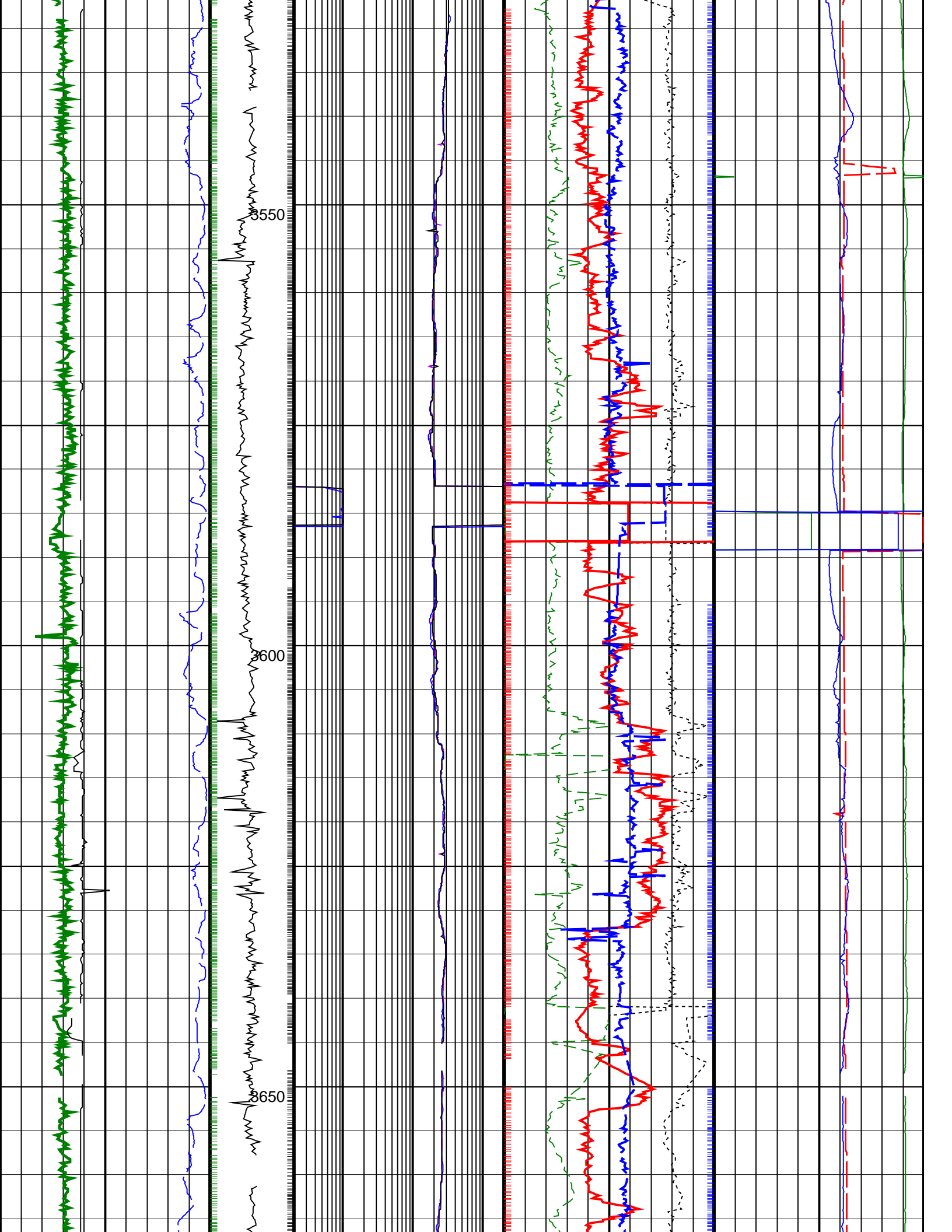


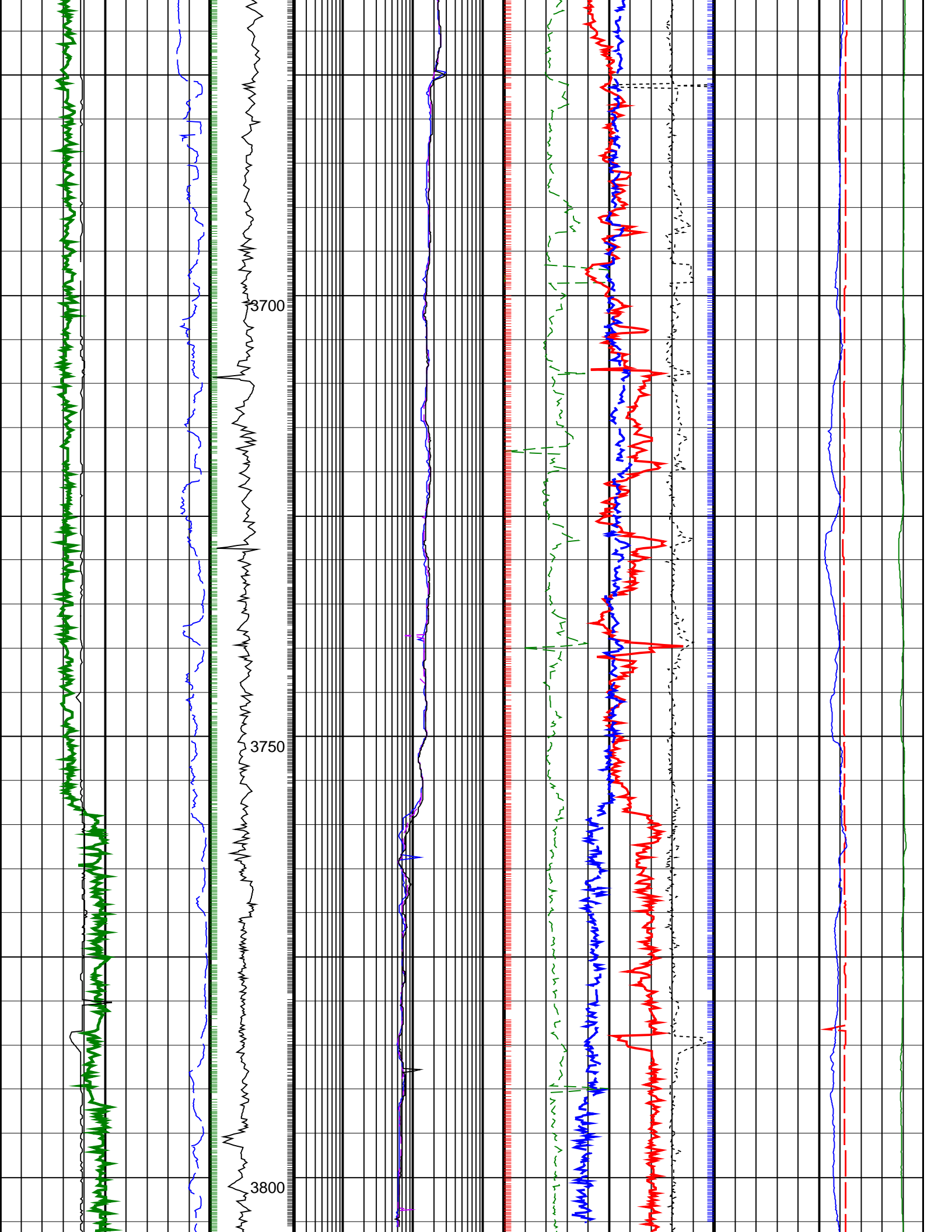












<div>ROP*5 (ROP5) 200 ————— 0 (M/HR)</div>		<div>MWD Collar RPM (CRPM_RT) (RPM) 0 400</div>		<div>ARC Phase Shift Resistivity 16 inch at 2 MHz, Real-Time (P16H_ECO_RT) 0.2 ————— 200 (OHMM)</div>		<div>Bulk Density, Bottom, Real-Time, Computed Downhole (ROBB_DH_ECO_RT) 1.85 ————— 2.85 (G/C3)</div>		<div>Downhole Annulus Temperature, Real Time, Computed Downhole (DHAT_DH_ECO_RT) 0 ————— 200 (DEGC)</div>			
<div>Ultrasonic Caliper, Average Diameter, Real-Time, Computed Downhole (UCAV_DH_ECO_RT) 6 ————— 16 (IN)</div>				<div>ARC Phase Shift Resistivity 28 inch at 2 MHz, Real-Time (P28H_ECO_RT) 0.2 ————— 200 (OHMM)</div>		<div>Photoelectric Factor, Bottom, Real-Time, Computed Downhole (PEB_DH_ECO_RT) 0 ————— 10 (----)</div>		<div>Bulk Density Correction, Bottom, Real-Time Computed Downhole (DRHB_DH_ECO_RT) (G/C3) -0.25 0.25</div>		<div>Downhole Annulus Pressure, Real Time, Computed Downhole (DHAP_DH_ECO_RT) 0 ————— 6000 (PSI)</div>	
<div>Gamma Ray, Average, Real-Time, Computed Downhole (GRMA_DH_ECO_RT) 0 ————— 200 (GAPI)</div>				<div>ARC Phase Shift Resistivity 40 inch at 2 MHz, Real-Time (P40H_ECO_RT) 0.2 ————— 200 (OHMM)</div>		<div>Thermal Neutron Porosity, Average, Real-Time (TNPH_ECO_RT) 45 ————— -15 (PU)</div>		<div>Equivalent Circulating Density, Real-Time (ECD_ECO_RT) 10 ————— 15 (LB/G)</div>			
<div>PIP SUMMARY</div> <div>Density Samples</div> <div>Gamma Ray Samples</div> <div>Resistivity Samples</div> <div>Neutron Samples</div>											
<div>IDEAL Version: ID11_0C_01</div> <div>IDEAL</div>											